

Made in
Australia

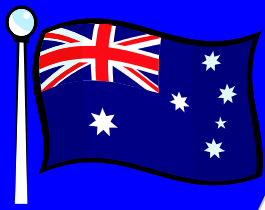
BERENDS RM80

Heavy Duty Trailing Offset Disc Plough

- Gibbins Rawlings have been making ploughs since 1878 - over 130 years of experience. Berends have been continuing this tradition for the last 25 years of producing tough, reliable product at an affordable price.
- Designed for tough conditions, the RM80 is similar to the RM75 with the main difference being in the greater number of bearings and shorter axles.
- Ideal for primary and secondary tillage for 75HP –165HP tractors.
- Fitted with 24" x 5mm , 24" x 6mm, 26" x 6mm or 28" x 8mm scalloped discs. **All discs are European Bellota Boron discs which carry a *lifetime warranty* against manufacturing failure.**



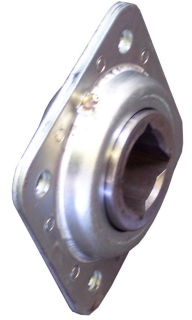
- Fitted with two 11 x 16 flotation wheels on a 5 ton axle. Hydraulic wheel lift is standard. All models fitted with 8" Australian made Eaton rams.
- 40mm square high tensile gang bolts.
- Single pressure screw can be adjusted to transfer weight to the rear of the cultivator, resulting in even disc penetration. Option of fixed or floating position.



Made in Australia



- Flanged disc bearings designed specifically for severe tillage applications. The bearings are encapsulated in two case hardened zinc plated stampings. Two nitrile 'O' rings are fitted to exclude contaminants and provide a grease seal to ensure lubricant goes directly into the bearing.



Picture (above) - 28 plate RM80 working up a harvested pine plantation in North Island, New Zealand.

- Fully adjustable drawbar.
- Solid cast spools throughout the gangs provide ballast weight in the gangs, where it counts, rather than the main frame. Each is individually machined to suit the disc for extra strength.
- 9" disc spacing.

- Australian made Ryco hoses are used with a minimum burst pressure of 20,400 psi.
- Prong type scrapers are standard - formed scrapers on request.
- Parking jack is standard.
- Optional furrow fillers available.

	20 plate	24 plate	28 plate	32 plate
Weight (approx)	1700 kg	1970kg	2190kg	2510kg
No. bearings	8	12	12	16
No. axles	4	6	6	8
Cutting width	2.3m (7'6")	2.74m (9')	3.2m (10'6")	3.66m (12')



John Berends Implements Pty Ltd

130 Frankston-Dandenong Rd, Dandenong South, Vic. 3175

Ph: (03) 9791 2494 Fax: (03) 9794 5568

email: berends@johnberendsimplements.com.au

www.johnberendsimplements.com.au